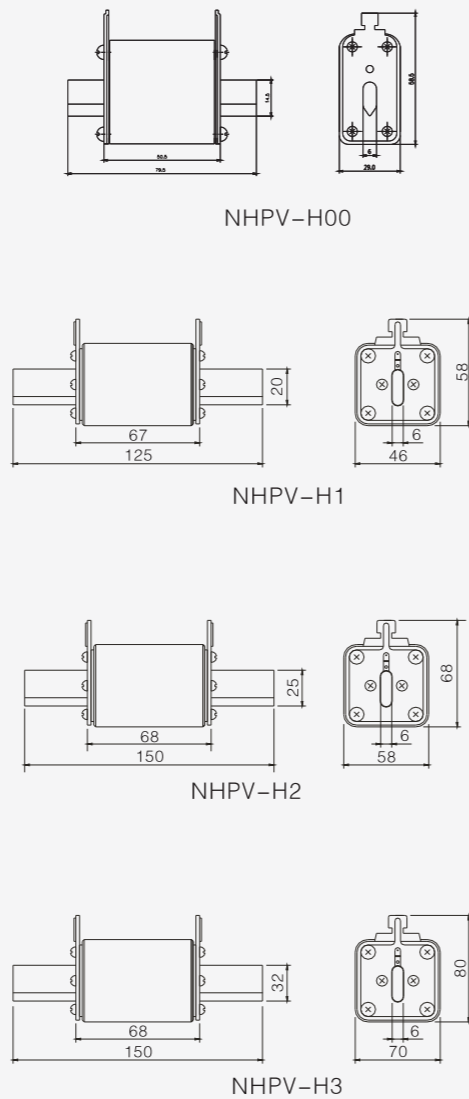


NHPV-H00 50-125A 1000V DC
 NHPV-H1 80-200A 1000V DC
 NHPV-H2 200-315A 1000V DC
 NHPV-H3 315-500A 1000V DC

Photovoltaic Fuse

- ✦ Class of Operation: gPV
- ✦ Standard: IEC 60269-6
- ✦ Breaking Capacity: 50kA
- ✦ Time Constant: 1-3ms

Dimensions-mm

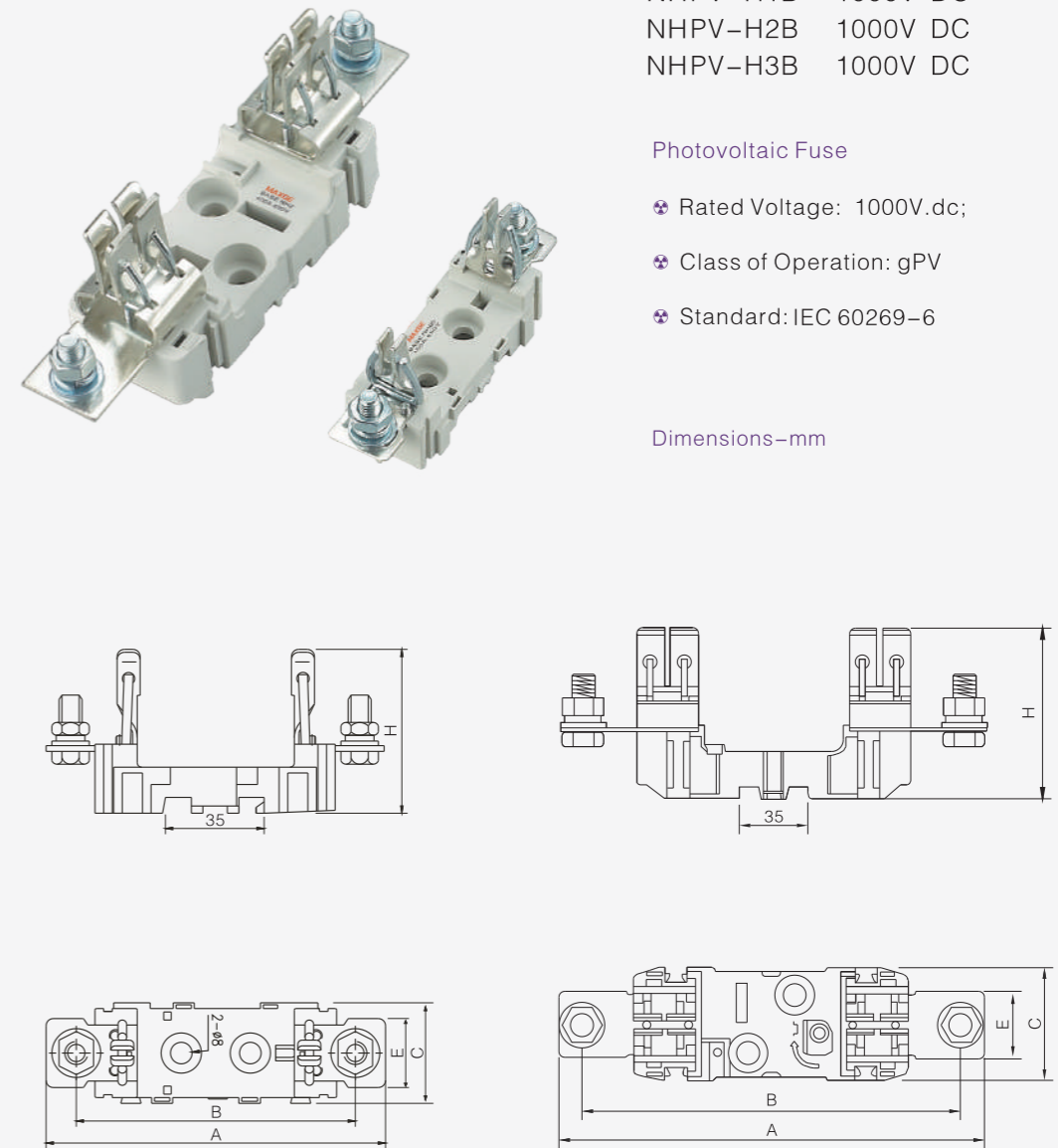


NHPV-H00B 1000V DC
 NHPV-H1B 1000V DC
 NHPV-H2B 1000V DC
 NHPV-H3B 1000V DC

Photovoltaic Fuse

- ✦ Rated Voltage: 1000V dc;
- ✦ Class of Operation: gPV
- ✦ Standard: IEC 60269-6

Dimensions-mm



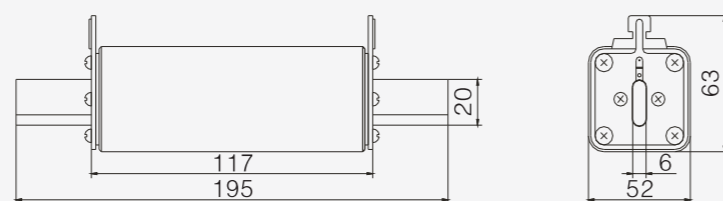
Model	Applicable fuse link	Rated voltage (V)	Rated current (A)	Overall dimension/size (mm)				
				A	B	C	E	H
NHPV-H00B	NHPV-H00	1000V dc	125	119	98	34	23	57
NHPV-H1B	NHPV-H1	1000V dc	200	208	176	58	32	82
NHPV-H2B	NHPV-H2	1000V dc	315	224	192	58	35	89
NHPV-H3B	NHPV-H3	1000V dc	500	239	207	58	40	106

NHPV-H1XL 63A-200A 1500V DC
 NHPV-H2XL 125A-315A 1500V DC
 NHPV-H3L 315A-500A 1500V DC

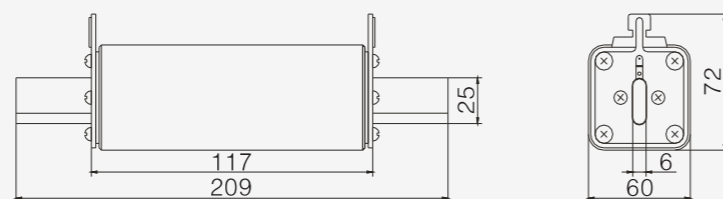
Photovoltaic Fuse

- ✦ Class of Operation: gPV
- ✦ Standard: IEC 60269-6
- ✦ Breaking Capacity: 30kA
- ✦ Time Constant: 1-3ms

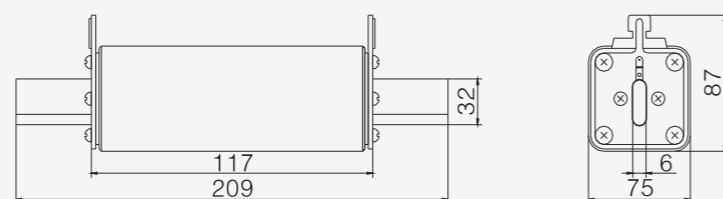
Dimensions-mm



NHPV-H1XL



NHPV-H2XL



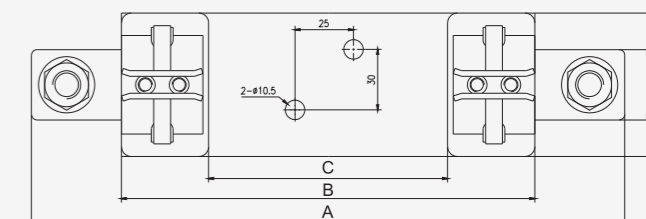
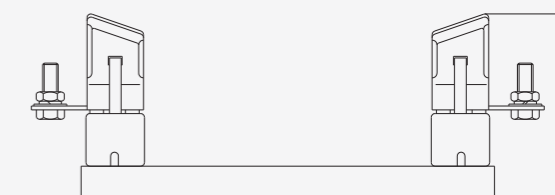
NHPV-H3L

NHPV-H1XLB 1500V DC
 NHPV-H2XLB 1500V DC
 NHPV-H3LB 1500V DC

Photovoltaic Fuse

- ✦ Rated Voltage: 1500V .dc;
- ✦ Class of Operation: gPV
- ✦ Standard: IEC 60269-6

Dimensions-mm



Model	Applicable fuse link	Rated voltage (V)	Rated current (A)	Overall dimension/size(mm)				
				A	B	C	E	H
NHPV-H1XLB	NHPV-H1XL	1500V dc	200	268	199	135	52.5	102
NHPV-H2XLB	NHPV-H2XL	1500V dc	315	278	210	137	63	104
NHPV-H3LB	NHPV-H3L	1500V dc	500	306	212	147	80.5	108

